

Guidance on cold wave

ID: 202007-u2

Area concerned: Norway, Sweden, Finland, Ireland, United Kingdom, France, Luxembourg, Belgium, Netherlands, Denmark, Germany, Switzerland, Austria, Czech Republic, Slovakia, Poland, Ukraine, Belarus, Lithuania, Latvia, Estonia, European Russia

Initial statement issued on 16 April 2020

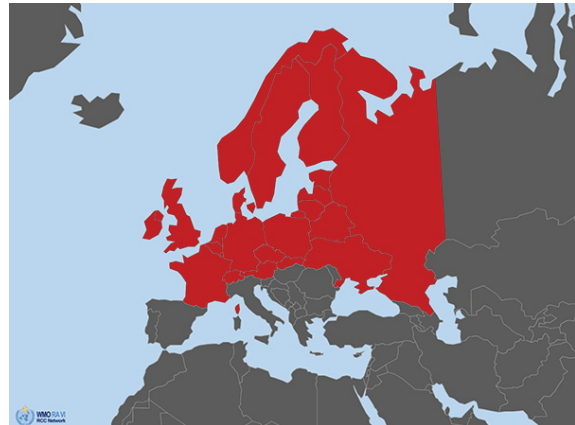
First update issued on 28 April 2020

Second update issued on 6 May 2020

Valid: Begin: 16 April 2020

End: 19 May 2020

To: Climate Watch focal points of NMHS of Norway, Sweden, Finland, Ireland, United Kingdom, France, Luxembourg, Belgium, Netherlands, Denmark, Germany, Switzerland, Austria, Czech Republic, Slovakia, Poland, Ukraine, Belarus, Lithuania, Latvia, Estonia, Russia



The RA VI RCC Network Offenbach Node on Climate Monitoring (RCC Node-CM) is responsible for providing Climate Watch guidance information for NMHSs' own consideration for issuing climate advisories for their territory.

After having consulted the consortium partners of the RCC Node-CM and RCC Node-LRF (RA VI RCC Network Toulouse and Moscow Node on Long-Range Forecasting), RCC Node-CM issues the following guidance information:

Due to the results from monthly forecasts we expect:

“Temporarily below-normal temperature within the next two weeks in Northern, Western, Central and Eastern Europe with risk of frost periods. A first cold spell is presently extending over Central Europe to the south. A second more intense cold wave is expected to arrive in Northwestern Europe the coming weekend and will propagate over Central Europe to Eastern Europe during next week. Weekly anomalies will be mostly between -1 and -3°C, partly colder. The probability is above 90 %. The cold wave can have significant impact on agriculture. “

This information should be used as guidance for the National Meteorological and Hydrological Services (NMHS) in a pre-operational mode. It is up to the above-mentioned NMHSs to monitor the status and evolution of the current climate conditions closely and to consider issuing a national Climate Watch Advisory. RCC Node-CM would appreciate feedback from NMHS whether this information was helpful. Also, any suggestion on further pieces of information needed by NMHSs is highly welcomed!

A template for a national climate watch advisory can be provided by DWD on request as agreed among the climate watch pilots and RCC Node-CM.

Climate Watch Advisory

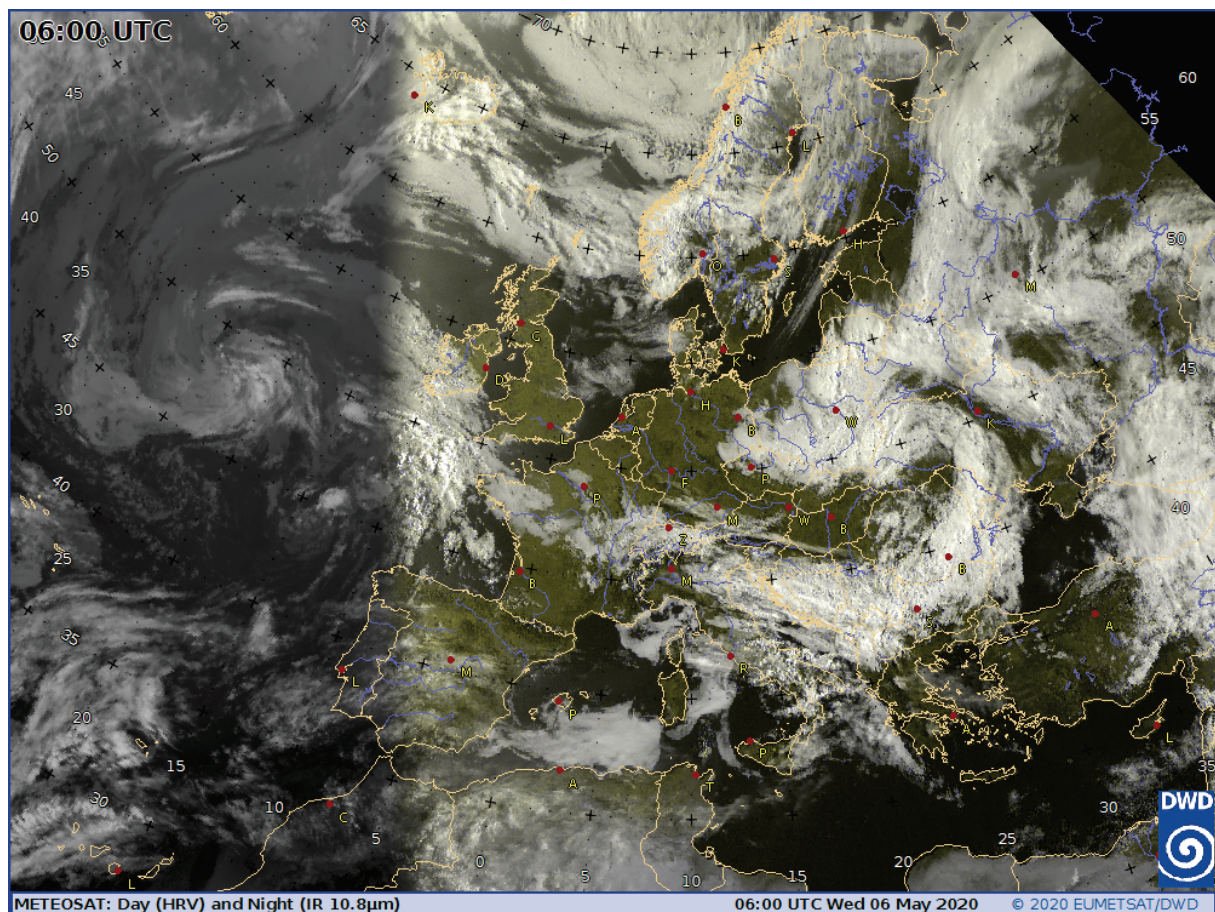
Please note that further information can be obtained from RCC Node-CM website (www.dwd.de/rcc-cm) concerning Climate Monitoring and from RCC Node-LRF websites (<http://seasonal.meteo.fr>, <http://neacc.meteoinfo.ru/forecast>) concerning Long-Range Forecast or by e-mail to rcc.cm@dwd.de or rcc-lrf-mf@meteo.fr.

For ECMWF members, further information on monthly forecasts after logging in is provided at <http://www.ecmwf.int/> ->Forecasts

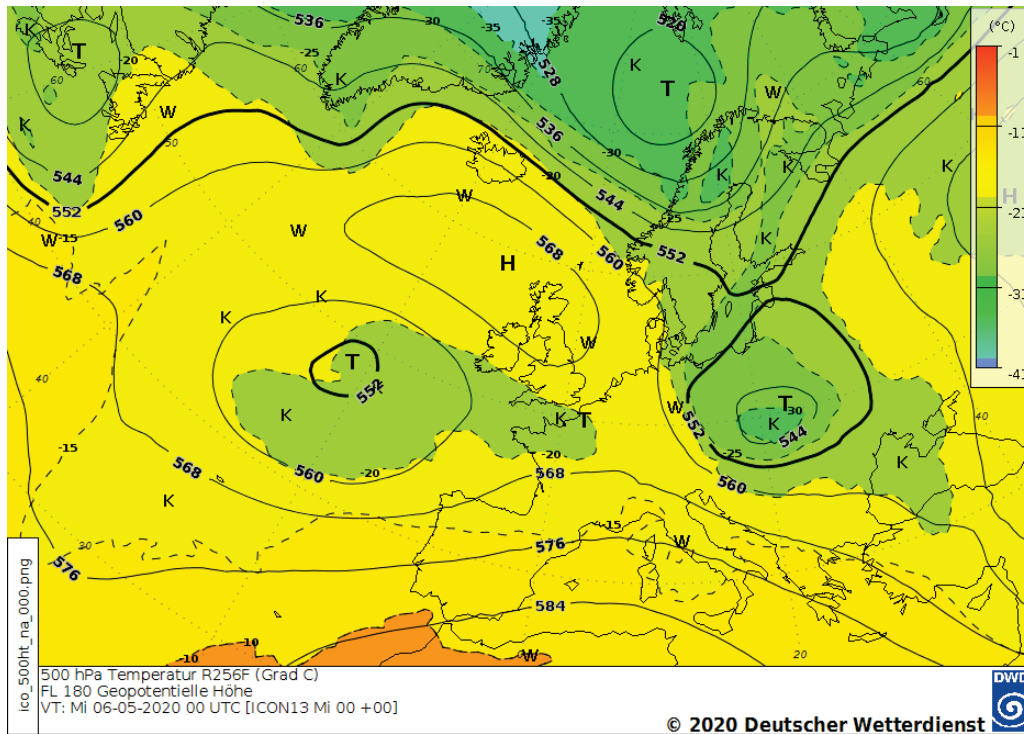
We will monitor the evolution of the anomaly, issue updates if significant change arise and close the advice when no clear signal can be detected in the forecasts.

On behalf of the RCC Node-CM Team

Supplementary material:

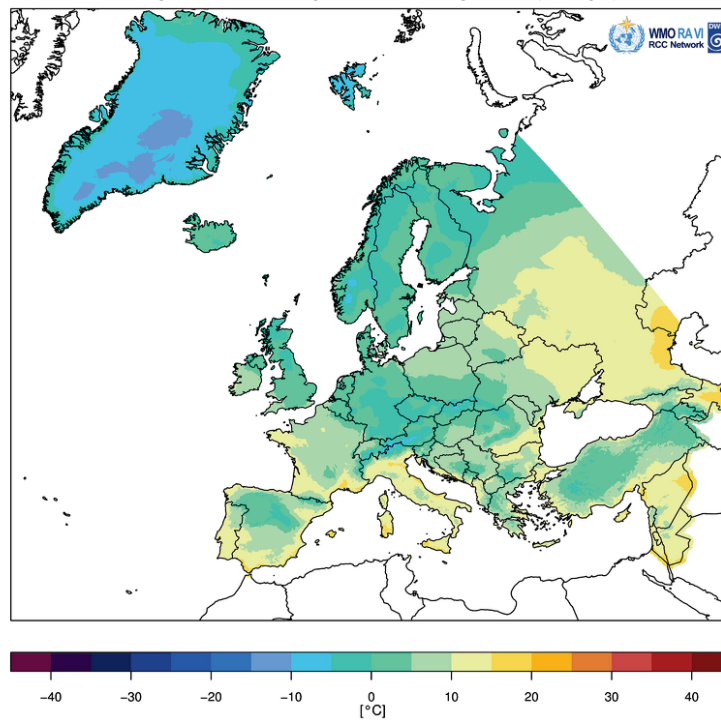


Meteosat satellite image 6 May 2020, 06 UTC. Source: DWD



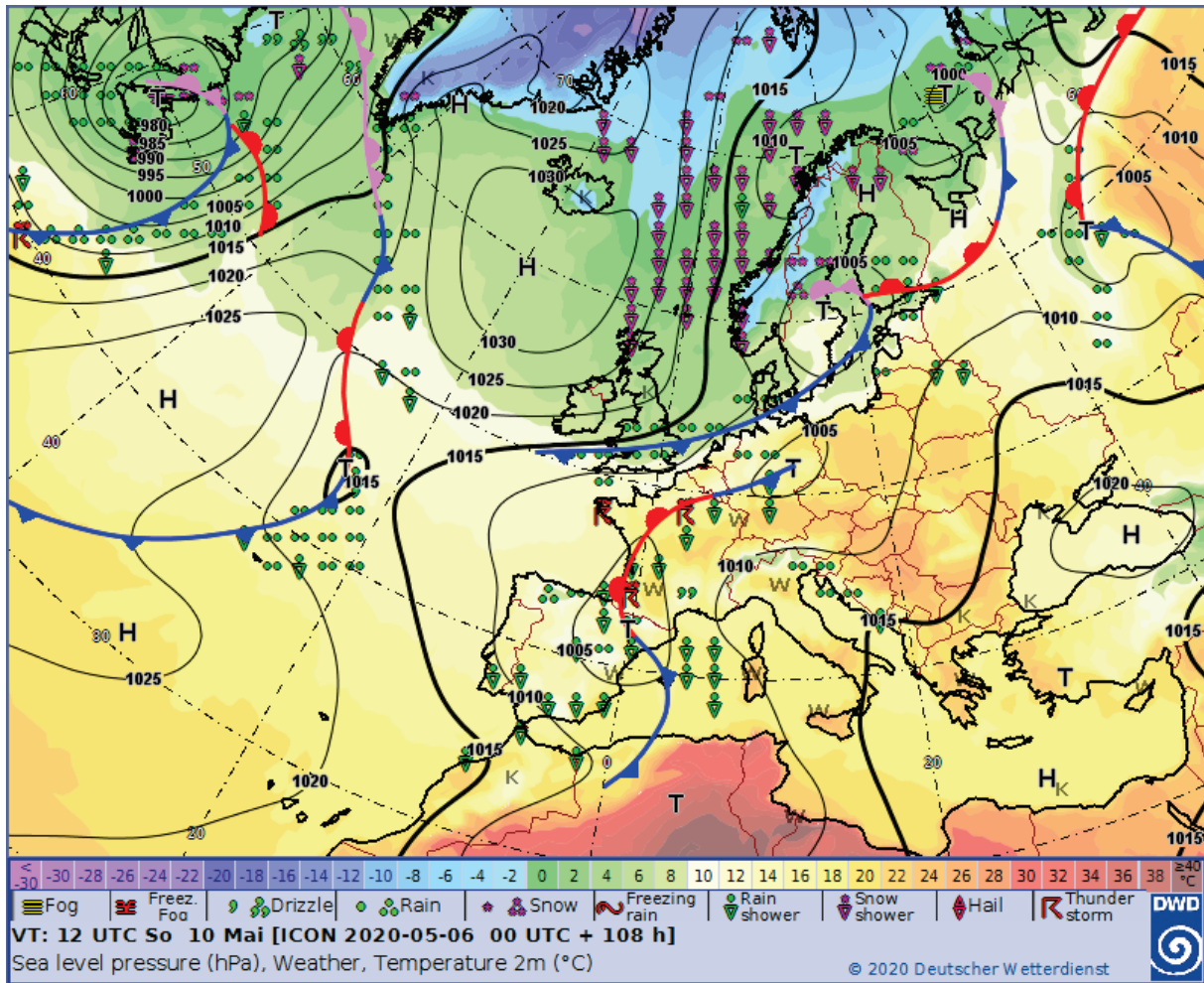
500-hPa chart, 6 May 2020, 00 UTC. Source: DWD

Tägliche Minimumtemperatur: 6. Mai 2020 (Europa)
Daily Minimum Temperature: 6 May 2020 (Europe)



Daily minimum temperature on 6 May 2020. Source: DWD,
https://www.dwd.de/DE/leistungen/rcccm/int/rcccm_int_txn.html?nn=490674

Climate Watch Advisory



Forecast chart for 10 May 2020, 12 UTC, Source: DWD,

https://www.dwd.de/EN/ourservices/hobbiymet_wcharts_europe/hobbyeuropecharts.html;jsessionid=18450C0FB47C1FB8EE913A5C65E8F74E.live11053